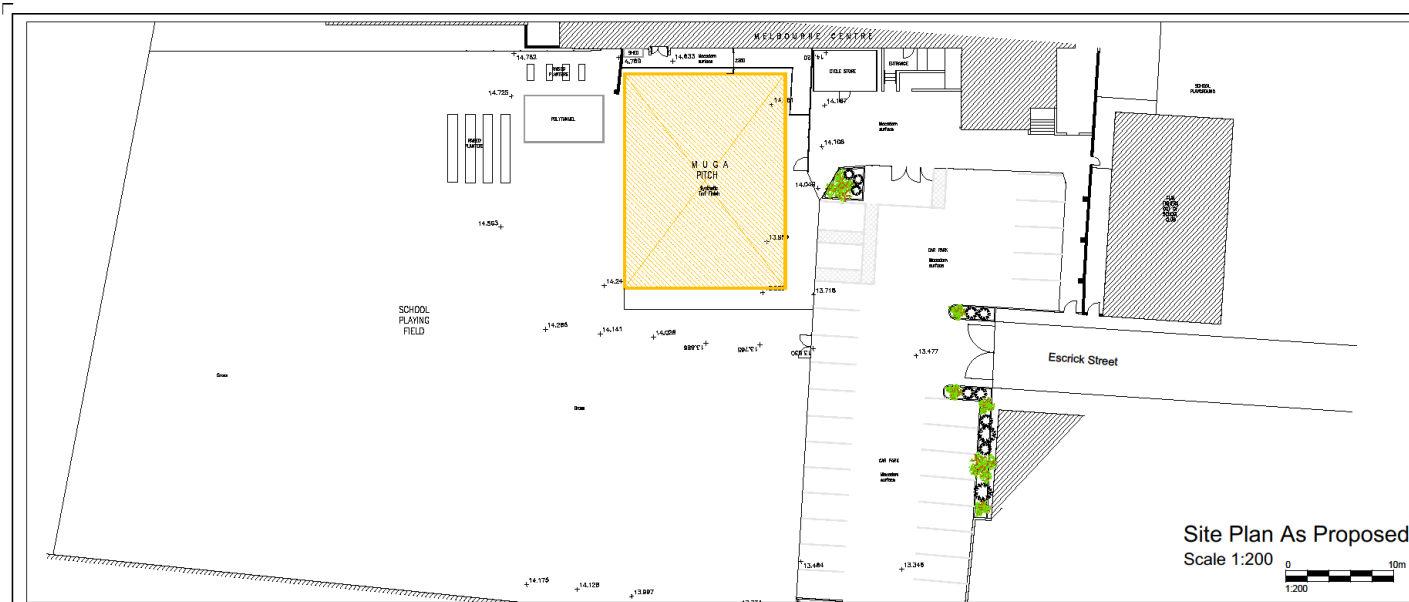




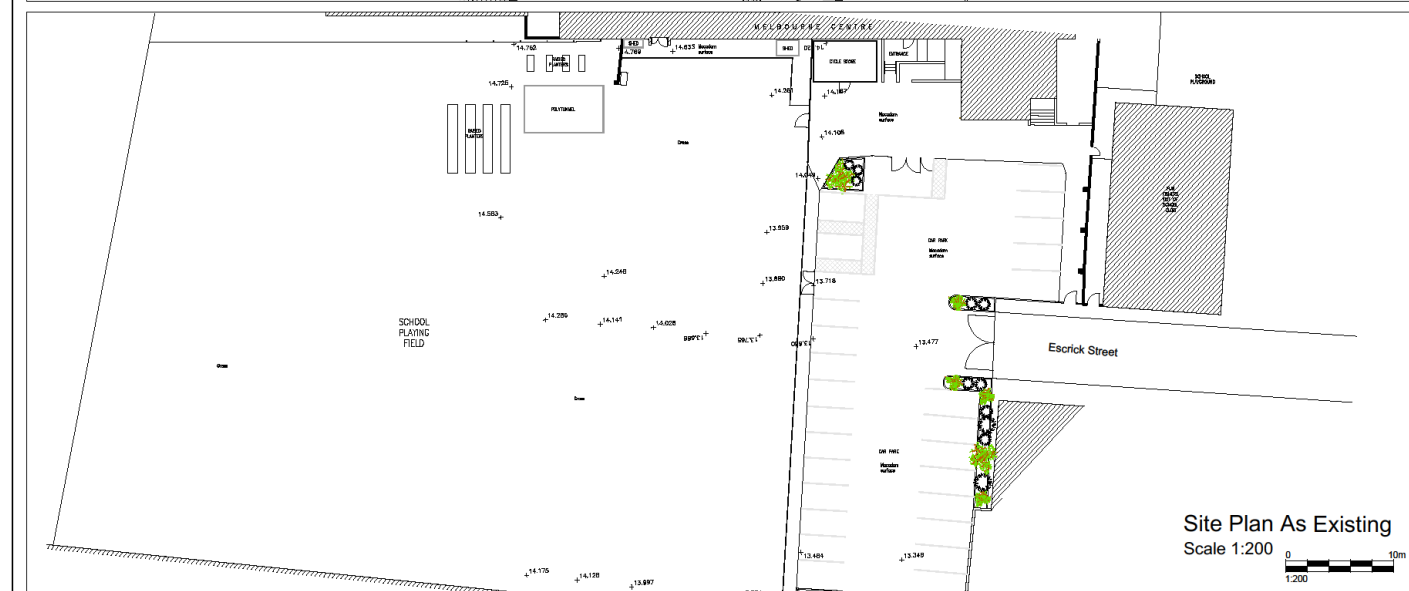
Planning Committee B

22/00787/GRG3

Fishergate Primary School Fishergate



Site Plan As Proposed
Scale 1:200



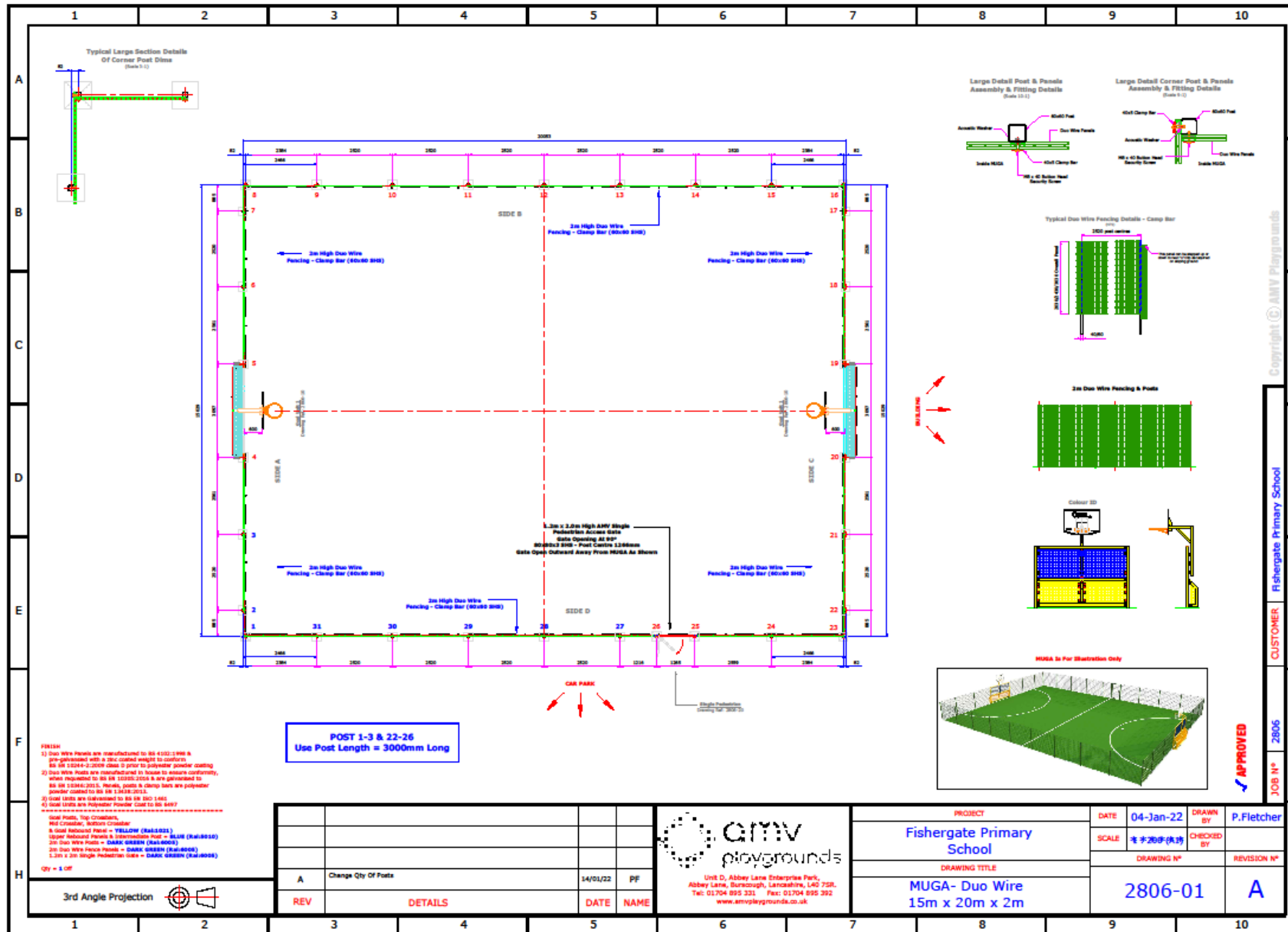
Site Plan As Existing
Scale 1:200

All dimensions must be checked on site and not scaled from this drawing
CYC PREMISES FOLDER REFERENCE
E00530
REVISION NOTES

Rev	Date	Revision	By

	Property Services Civil School Office School Floor York YO1 1GA
	Contact: Tel: 01904 770000 Fax: 01904 770000 Email:
Job Title: Fishergate Primary School Fishergate York	
Proposed Muga Pitch To School Field Site Plan as Existing & Proposed	
Drawn: VG	Checked: AT
Date: April 2022	Scale: 1:200
Drawing Title: Planning	
Drawing Number: 190024.11	Revision: /





FINISH
 1) Duo Wire Panels are manufactured to BS 4130 (1992) & are galvanized with a 20µ coated weight to conform to BS 4130-4-2000 class 2 prior to polyester powder coating.
 2) Duo Wire Posts are manufactured to BS 4130-4-2000 class 2 prior to polyester powder coating, when required to BS 4130-4-2000 class 2 are galvanized to BS 4130-4-2000 class 2. Panels, posts & clamp bars are polyester powder coated to BS 4130-4-2000 class 2.
 3) Dual Units are galvanneal to BS 4130-4-2000 class 2.
 4) Dual Units are galvanneal powder coat to BS 4130-4-2000 class 2.

 Dual Posts, Top Crossbar, Mid Crossbar, Bottom Crossbar
 5) Dual Reinforced Panels = YELLOW (RAL6002)
 6) Super Reinforced Panels & Intermediate Post = BLUE (RAL6004)
 7) Duo Wire Posts = DARK GREEN (RAL6003)
 8) Duo Wire Panels = DARK GREEN (RAL6003)
 9) 2m Duo Wire Panels = DARK GREEN (RAL6003)
 1,2m x 2m Single Pedestrian Gate = DARK GREEN (RAL6003)

Qty = 1 off
 3rd Angle Projection

REV	DETAILS	DATE	NAME
A	Change Qty Of Posts	14/01/22	PF



PROJECT	DATE	04-Jan-22	DRAWN BY	P.Fletcher
Fishergate Primary School	SCALE	1:100 (1:100)	CHECKED BY	
DRAWING TITLE	DRAWING N°	2806-01	REVISION N°	A
MUGA- Duo Wire 15m x 20m x 2m				

Copyright © AMV Playgrounds
 CUSTOMER: Fishergate Primary School
 JOB N°: 2806
 APPROVED